

**Laser in Diagnosis and Therapy: Fascinating
Results by the 7 Resonance-Frequencies
according to Paul Nogier and Frank Bahr.**

Dr. med., Dr. Sc. Michael Weber

President of European Laser Academy

DAA / EATCM

TCM - **LLLT**

Associated Professor University Witten - Herdecke

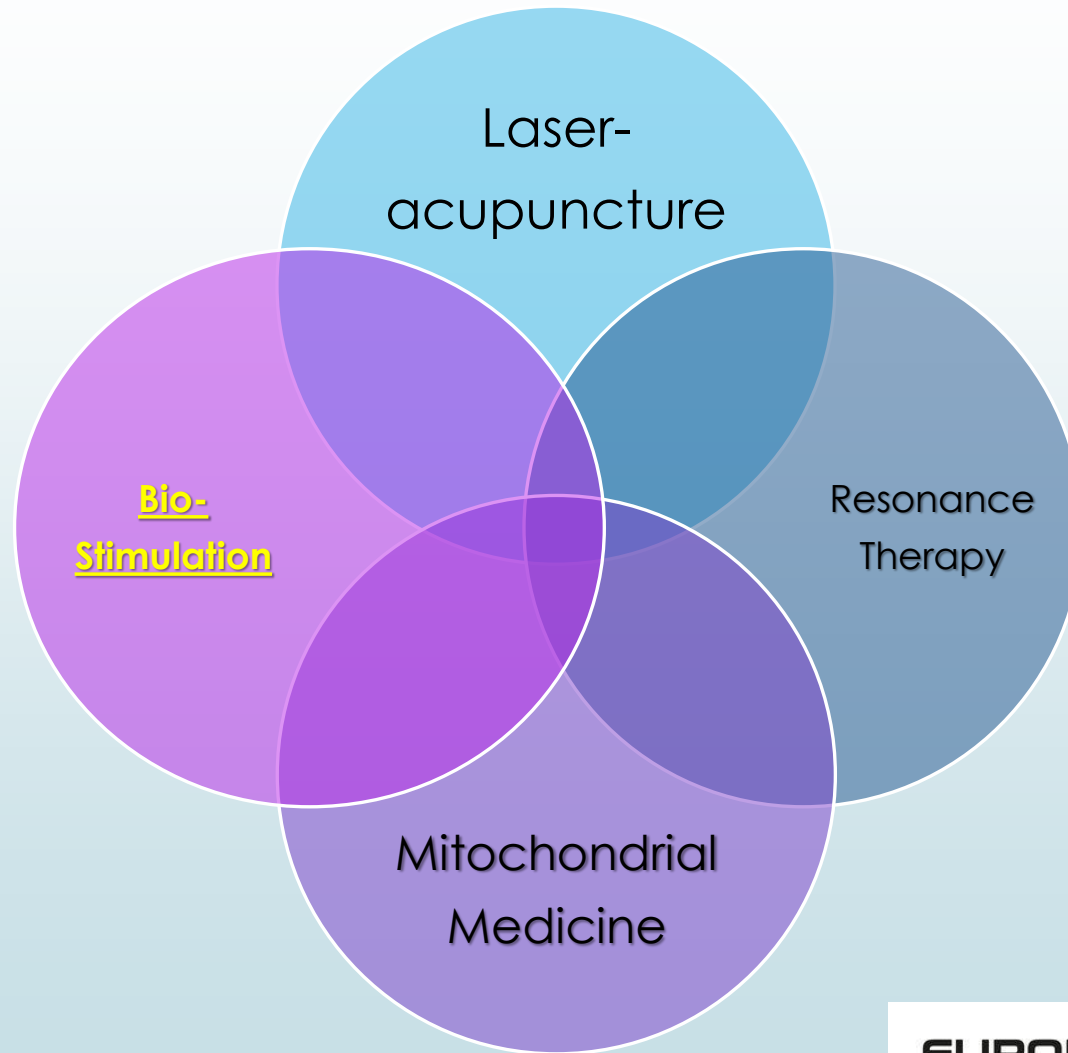
<https://european-laser-academy.com/>



EATCM

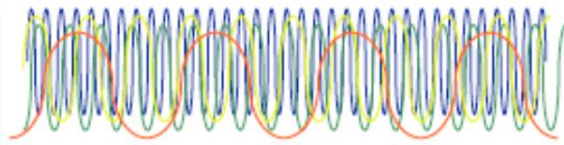
EUROPEAN LASER ACADEMY 
uniting eastern & western medicine

LLLT: more than modern acupuncture



EATCM

WHY LASER-LIGHT FOR DIAGNOSIS AND THERAPY?



White light
(no coherence of the rays)

White light

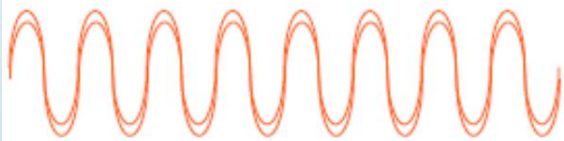
The sun (natural source of light) or a light bulb (artificial source of light) emit light of almost every wavelength in the visible part of the electromagnetic spectrum (approx. 400 – 750 nm). Due to this multitude of colours (polychromatic light) their light looks white.



Monochromatic light

Monochromatic light

Monochromatic light only contains light waves of a very narrow frequency spectrum. The colour shown by monochromatic light in the visible spectral range is known as its spectral colour.



Laser light

Laser light

Laser light is monochromatic and “synchronised”, i. e. its light waves exhibit a high degree of parallelism and coherence lengths. In optics the coherence length is the maximum difference in distance (space) or duration (time) at which two light rays emitted from the same light source still have a stable interference pattern on overlapping. The high level of alignment of the laser rays results in strong radiant intensity.

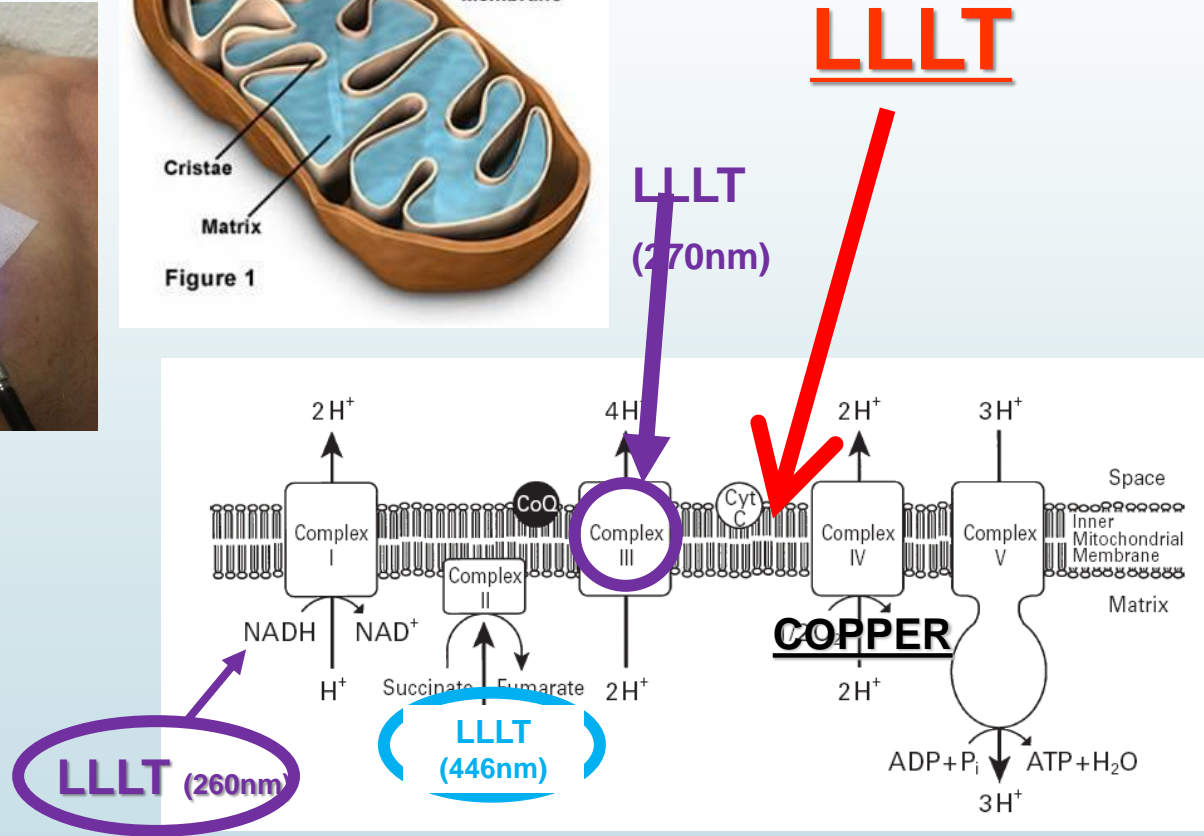
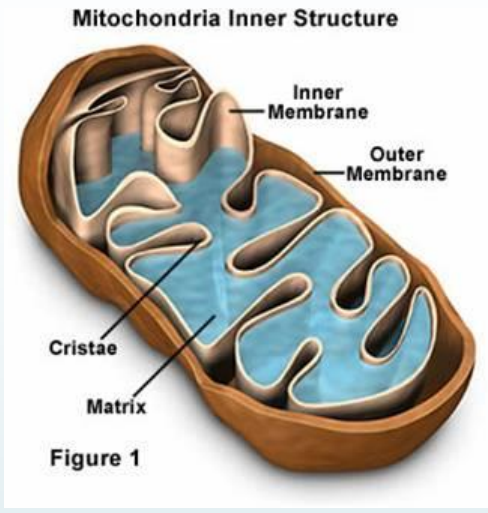
Fig: Characteristics of laser beams



EATCM

A PRACTICAL HANDBOOK
LASER ACUPUNCTURE
SUCCESSFUL TREATMENT CONCEPTS

EUROPEAN LASER ACADEMY 
uniting eastern & western medicine



EATCM

Frequencies and Frequencies



EATCM

COLOR of Laser-Light (nm)



Frequency of Laser-Beam (Hz)

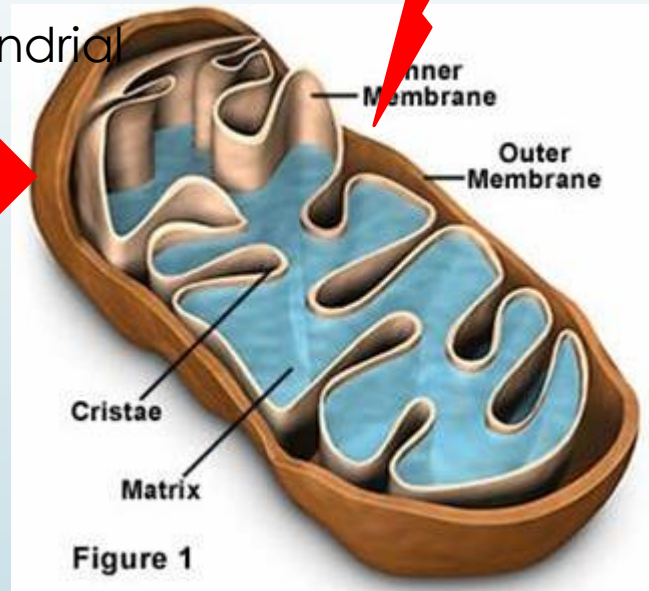
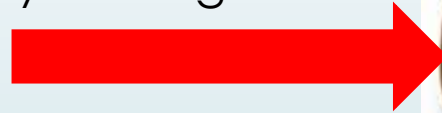
EUROPEAN LASER ACADEMY

uniting eastern & western medicine



Resonance - Therapy

Direct cellular + mitochondrial
Effect by laser light



Best Resonance
= Information



EATCM

EUROPEAN LASER ACADEMY

uniting eastern & western medicine



Biochemical / bio stimulatory effects
+ Cybernetic effects

Light = Resonance

Apfel



Wer hätte geahnt, dass in jedem Teilchen eines BioApfels die Gestalt Apfelbaumes, ja sogar der Apfelblüten, Samen und sogar ganzer Apfelgruppen sichtbar wird? Das gesamte Wesen des Apfels in seinem natürlichen Werdegang ist ganzheitlich und zeitlos in jedem Tröpfchen BioApfelsa und gespeichert. Es mutet an wie in einem Märchen, wo die Weisheit der Ganze in jedem Teil bewusst vorhanden ist, und wo alle Teilchen zum Ganzen zusammenwirken, als wäre es das Natürlichste der Welt. Uns ist eine solche zusammenhängende Wirklichkeit verstehen und in sie einzutreten, das natürliche Wesen der Dinge.

Im Nichtbio-Apfel ist diese wesentliche Information kaum mehr sichtbar, sie ist verwischt, verloren und in großen Teilen nur noch bruchstückhaft oder verschwommen vorhanden.



LLLT – Resonance Therapy

MEDicine

藥

Music

樂



EATCM

LLLT – Resonance - therapy

What is resonance therapy?

Resonance therapy is based on the assumption that resonance phenomena

- increase the absorption of photons and
- may further enhance the photo-biostimulatory effects of low-level laser therapy.
- **Resonance therapy rests on the finding that different rhythms have specific, predictable therapeutic effects.**



EATCM

EUROPEAN LASER ACADEMY 
uniting eastern & western medicine

LLLT: Resonance - therapy

► CW

➤ Continuous wave

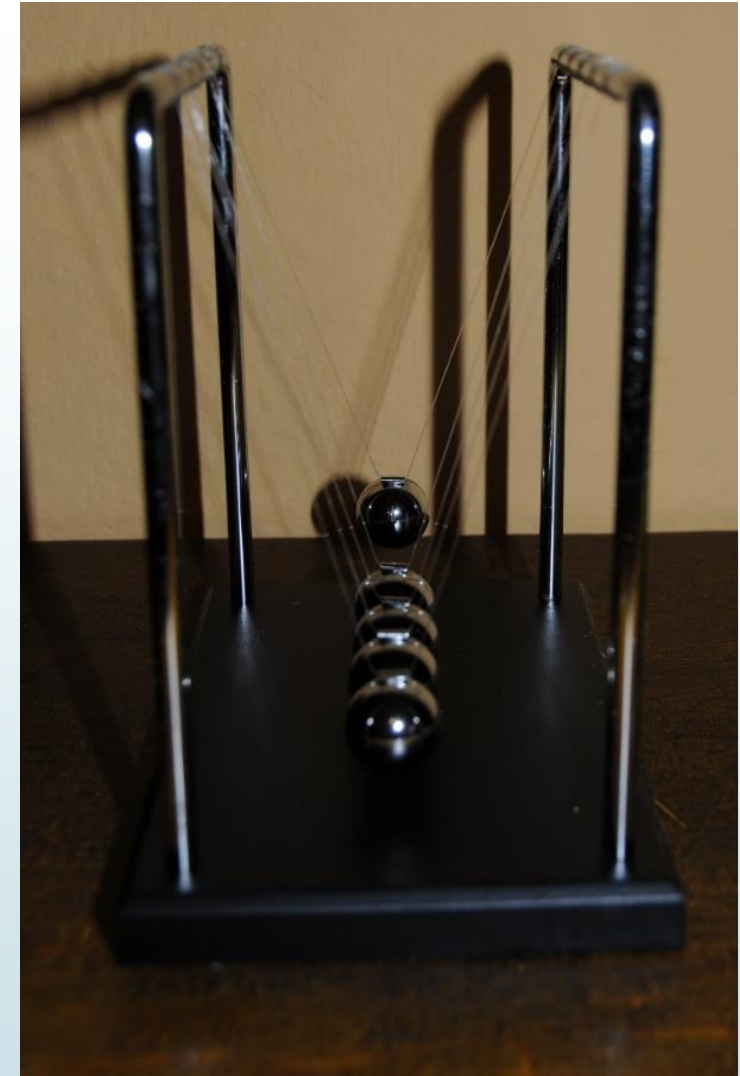
► Resonance – Therapy

➤ Photoabsorption ↑

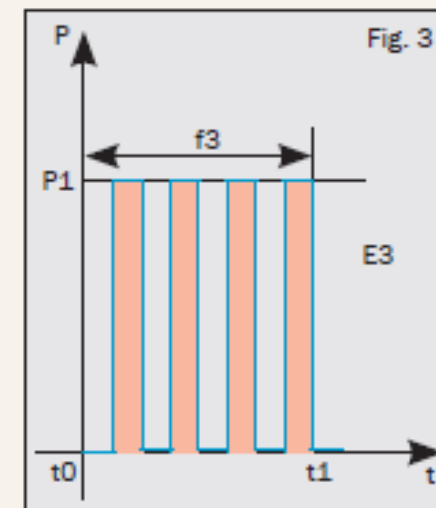
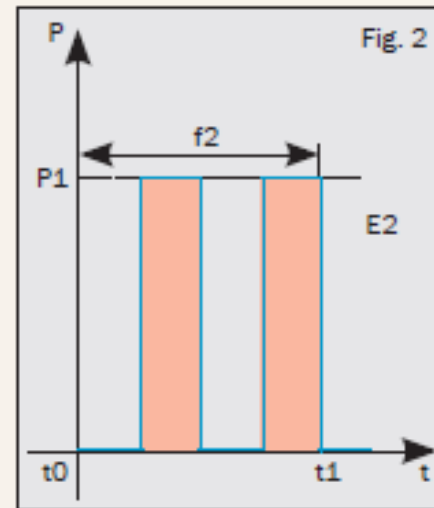
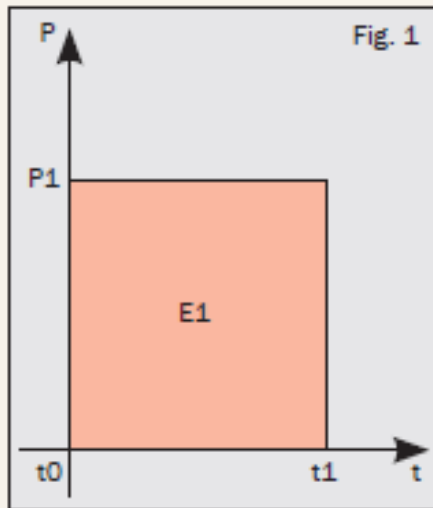
➤ Photo-biostimulatory effects ↑



EATCM



LLLT – Resonance - therapy



A PRACTICAL HANDBOOK
LASER ACUPUNCTURE
SUCCESSFUL TREATMENT CONCEPTS

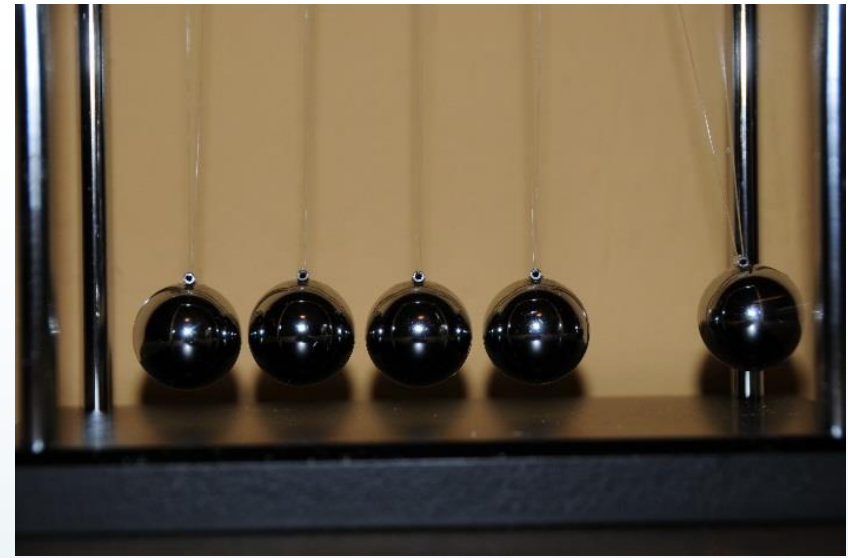


EATCM

EUROPEAN LASER ACADEMY
uniting eastern & western medicine



LLLT : Resonance - therapy



The interferences this causes result in amplification or elimination phenomena:

- constructive or destructive interferences

In the example of the pendulum, the movement pattern of the pendulum changes, it may even become disharmonic (the pendulum “wobbles”).



EATCM

7 Resonances according to Paul Nogier

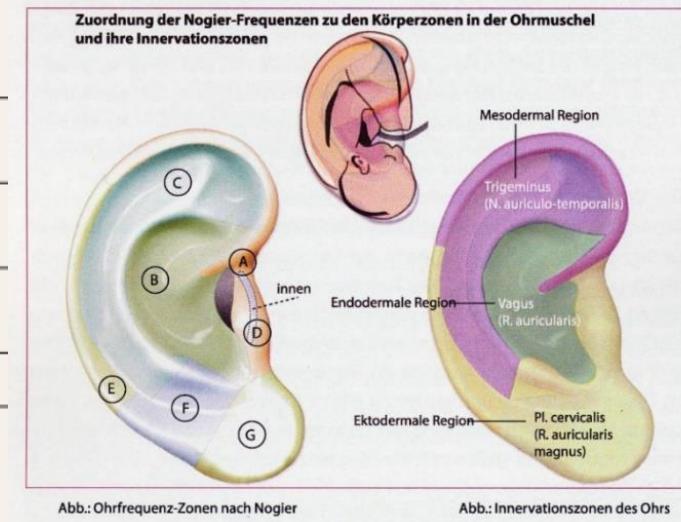
Nogier frequencies

For literature references to Nogier frequencies¹ see *Literature references*

Fre- quency	Resonance/effects	Orginal frequency	Higher octave	Referency to Bahr
A	Unrest and disorganisation frequency, resonance with the reticular formation, resonance at all disruption foci	2,28 Hz	292 Hz (A`)	5
B	Nutritive frequency, resonance for the inner organs	4,56 Hz	584 Hz (B`)	4
C	Mesenchymal frequency relating to the locomotor system, orthopedic frequency	9,12 Hz	1168 Hz (C`)	3
D	Relates to the tragus, laterality frequency, relation to the sympathetic nervous system	18,25 Hz	2336 Hz (D`)	2
E	Bone marrow frequency (motor and sensory)	36,50 Hz	4672 Hz (E`)	1
F	Relates to the dental-oral-maxillary region, relates to the subcortical parts of the brain (e. g. di- and mesencephalon, hypothalamus etc.), psychic frequency	73,00 Hz	9344 Hz (F`)	7
G	Psychosomatic frequency, relates to the cortex, eyes and maxillary sinuses	146,00 Hz	18688 Hz (G`)	6



EATCM



LLLT – Resonance - therapy



EATCM

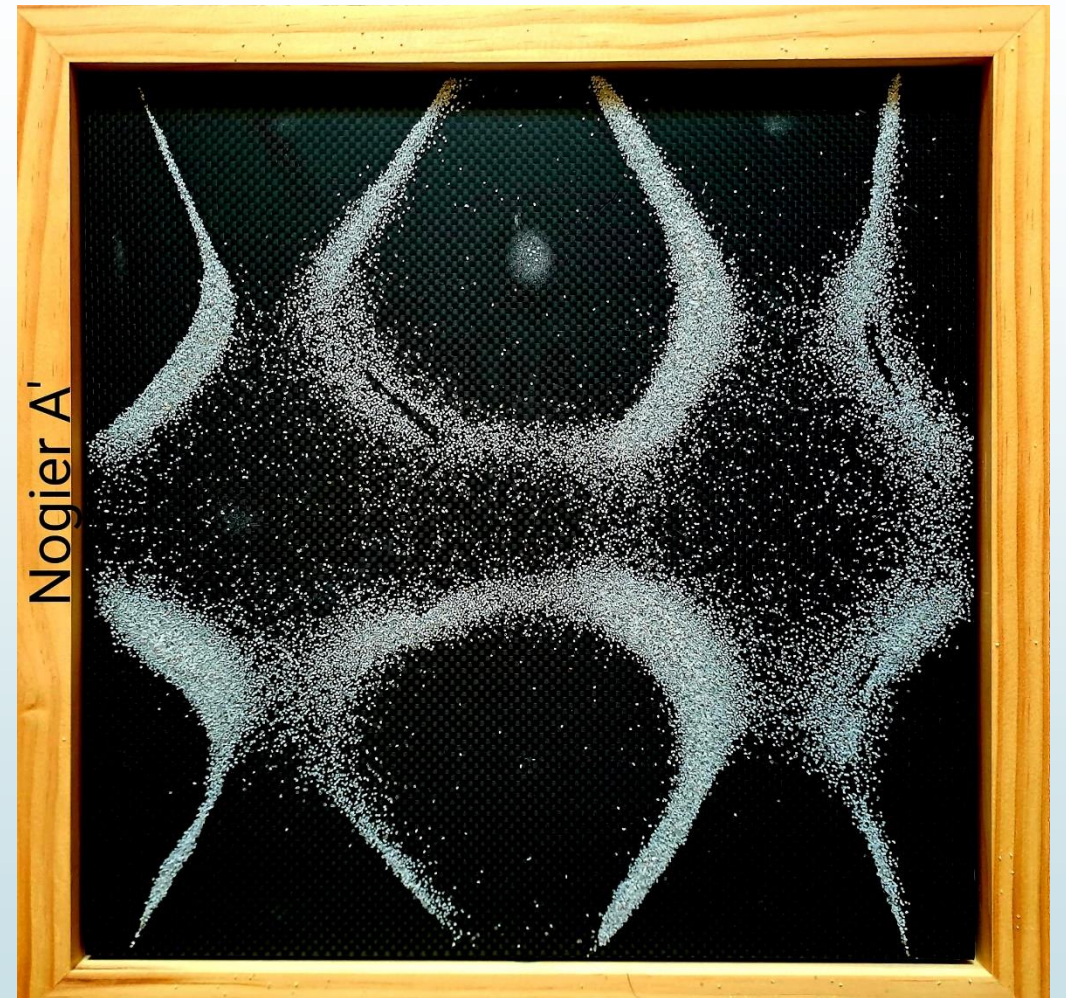
Bahr frequencies 1 to 7

Bahr	Resonance	Frequency	Reference to Nogier
1	Deep tissue layer	599,5 Hz	E
2	Middle tissue layer	1199 Hz	D
3	Surface layer (dominant side)	2398 Hz	C
4	Surface layer (non-dominant side)	4796 Hz	B
5	Cardinal point, antioscillatory	9592 Hz	A
6	Masked psychic disturbance fields	149,87 Hz	G
7	Isolated disturbance fields	299,75 Hz	F

Resonance Therapy Visualized



EATCM



Copyright: Dr. Földy; Vet. Med.; www.tierarztpraxisfuertcm.com

Resonance Therapy Visualized



EATCM



- Direct cellular resonance
- Acute Resonance
- Acute disturbances
- Detection Resonance
- (Integrative Resonance)

- VAS: Field of disturbances; inflammation; pain

- Natural Resonance of mucous membranes

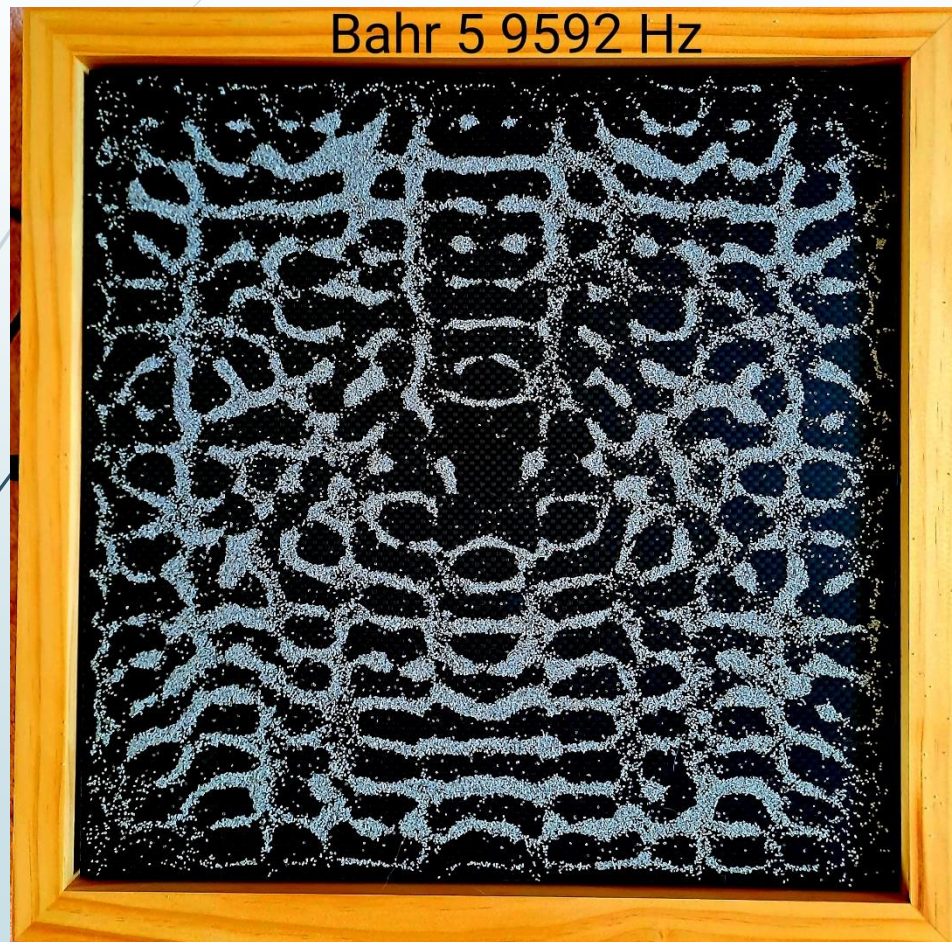
Copyright: Dr. Földy; Vet. Med.; www.tierarztpraxisfuertcm.com

Resonance Therapy Visualized



EATCM

Bahr 5



Bahr 5

- ▶ Direct cellular resonance
- ▶ Integrative Resonance
- ▶ „Anti-Oscillatory“ Resonance

- ▶ Therapeutic Resonance of disturbances detected by Nogier A

Copyright: Dr. Földy; Vet. Med.;
www.tierarztpraxisfuertcm.com

EUROPEAN LASER ACADEMY

uniting eastern & western medicine



LLLT – Resonance - therapy

Nogier A / A'

- ▶ Direct cellular resonance
- ▶ Acute Resonance
- ▶ Acute disturbances
- ▶ Detection Resonance
- ▶ (Integrative Resonance)

- ▶ VAS: Field of disturbances; inflammation; pain

- ▶ Natural Resonance of mucous membranes

Bahr 5

- ▶ Direct cellular resonance
- ▶ Integrative Resonance
- ▶ „Anti-Oscillatory“ Resonance

- ▶ Therapeutic Resonance of disturbances detected by Nogier A

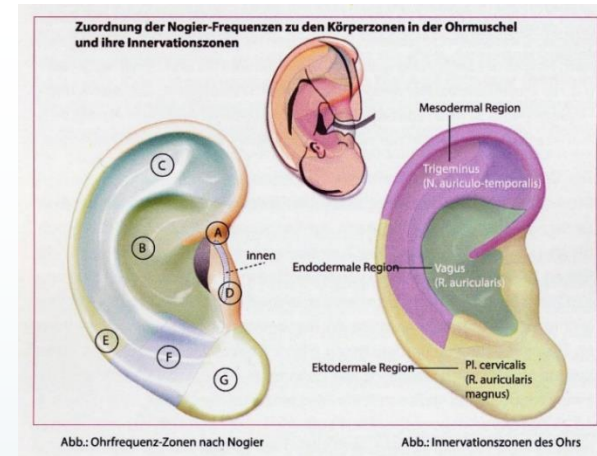


EATCM

LLLT – Resonance – therapy: Nogier B´

► Indications:

- **Nutritional resonance**
- **Metabolic resonance**
- **Inner organ resonance**
- **Immune resonance**



LLLT – Resonance - therapy

Nogier F / F'

- **Resonance of: Bones**
- **Resonance of Teeth**
- **Resonance of Jaws**
- **Resonance of Depression**
- **Developmental for children**

- VAS: dental foci

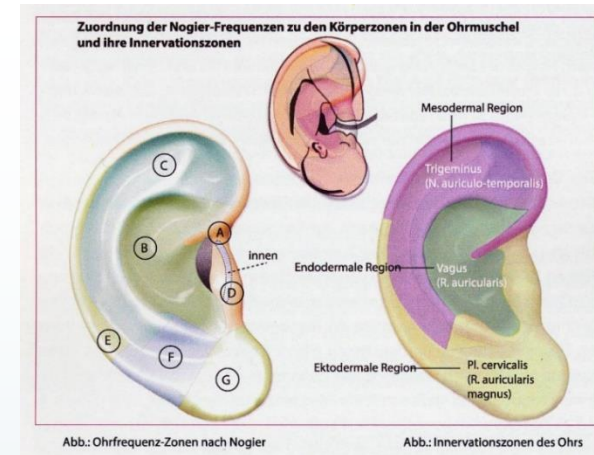


EATCM

Bahr 7

- Isolated fields of disturbance
- Integrative Resonance of Bones
- Integrative Resonance for Teeth
- Powerful for dental diseases

- Therapeutic Resonance of disturbances detected by Nogier A for dental issues



European Laser Clinics Portugal: 5 days Seminar in October 23rd to October 27th, 2023



<https://european-laser-academy.com>

EUROPEAN LASER ACADEMY 
uniting eastern & western medicine